

BRUCE MATHER

INDEPENDENT ESTATE AGENT



150 Meridian Road, Boston, PE21ONF

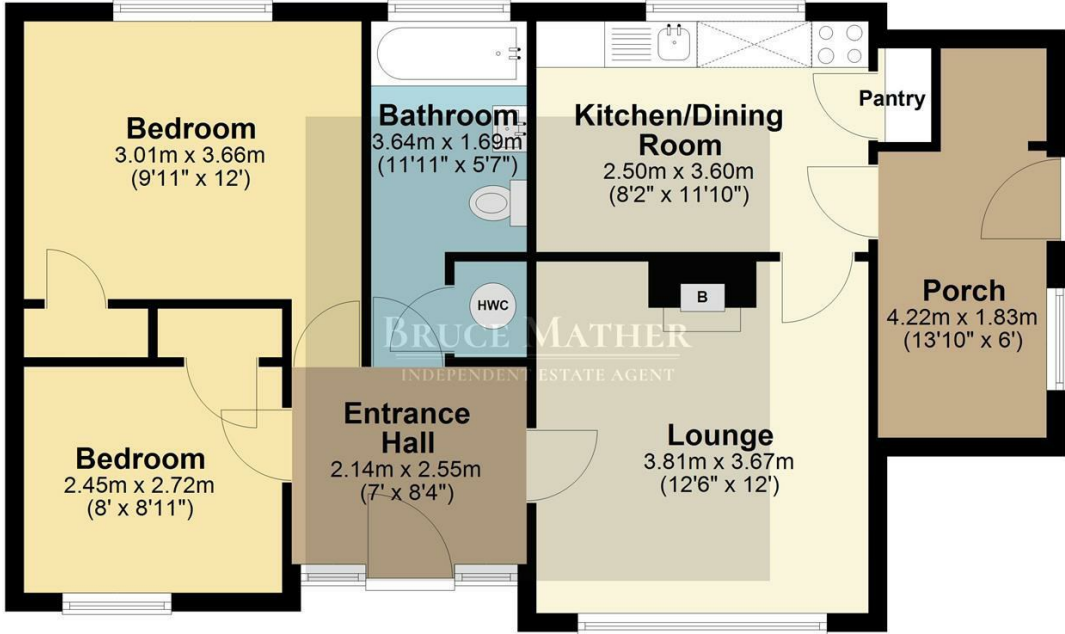
£150,000

A quaint two bedroom semi-detached bungalow in a popular residential area with parking and a good sized garden. The bungalow is in move straight in condition, the accommodation comprises of; porch/boot room, kitchen/diner, sitting room, bathroom, entrance hall and two bedrooms. To the front is a grass lawn and parking for several cars, to the rear is a large lawned garden with a shed. This comfortable home is located a residential part of Boston, with all amenities, shop, schools and pilgrim hospital all within a few minutes of the town centre. To arrange a viewing or for further information please call or email Bruce Mather Estate Agent on 01205 365032 or sales@brucemathere.co.uk.

Floor Plan

Ground Floor

Approx. 64.7 sq. metres (695.9 sq. feet)



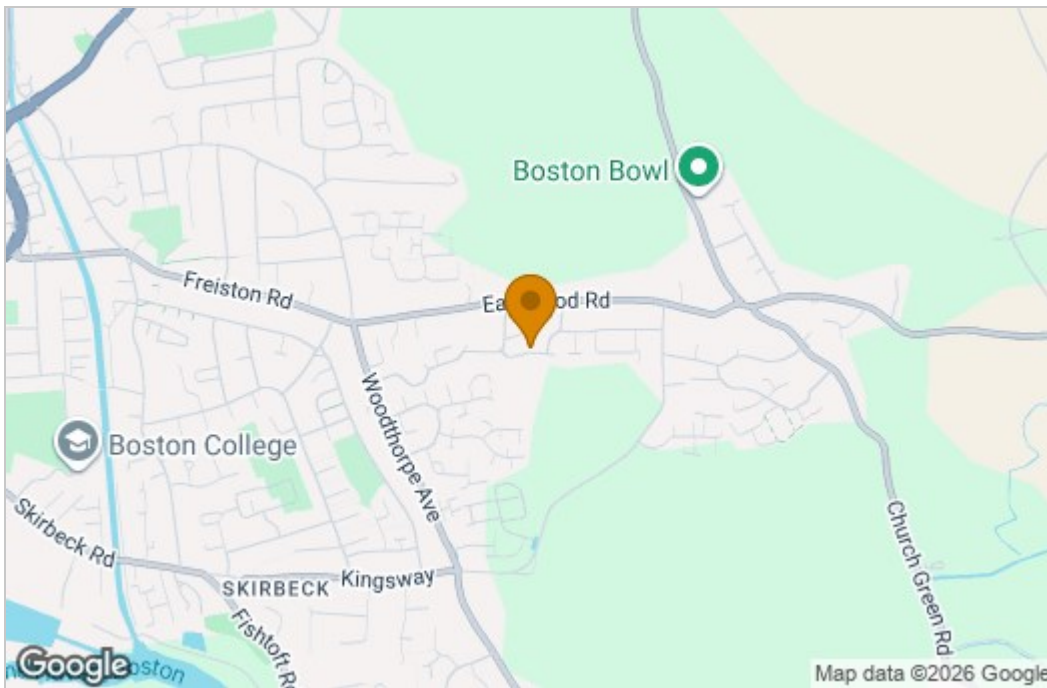
Total area: approx. 64.7 sq. metres (695.9 sq. feet)

All images used are for illustrative purposes. Images are for guidance only and may not necessarily represent a true and accurate depiction of the condition of property. Floor plans are intended to give an indication of the layout only. All images, floor plans and dimensions are not intended to form part any contract.

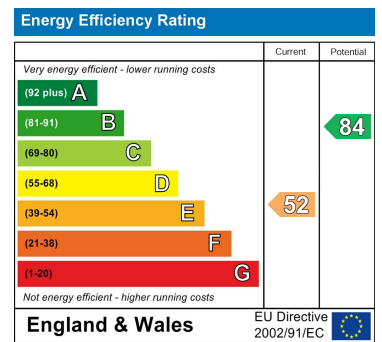
Plan produced using PlanUp.



Area Map



Energy Efficiency Graph



These particulars, whilst believed to be accurate are set out as a general outline only for guidance and do not constitute any part of an offer or contract. Intending purchasers should not rely on them as statements of representation of fact, but must satisfy themselves by inspection or otherwise as to their accuracy. No person in this firm's employment has the authority to make or give any representation or warranty in respect of the property.

6 Pump Square, Boston, Lincs, PE21 6QW

Tel: 01205 360 387 Email: sales@brucemather.co.uk brucemather.co.uk